

Operational Plan Draft - April 17, 2020

Overview

As we come out of the current stay at home order, we want to anticipate the potential next phase and begin to establish planning such that we can glorify God. We want to solidify our direction during this current period for upcoming phases using our resources effectively.

Operational Assumptions

6' Minimum non-family unit spacing

Airway protection

Occupancy loading diminished (fewer people total allowed to gather)

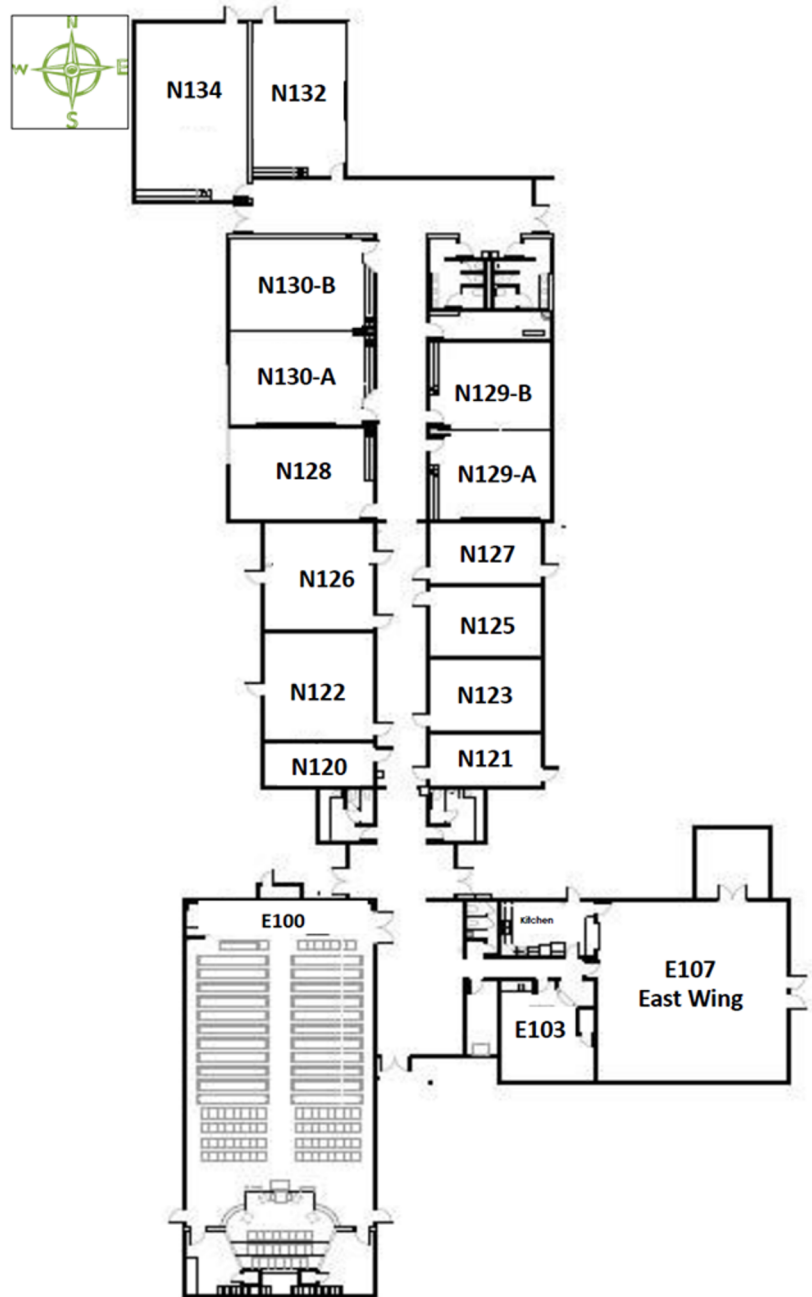
Make allowances for advanced contact tracing in the event of a confirmed case

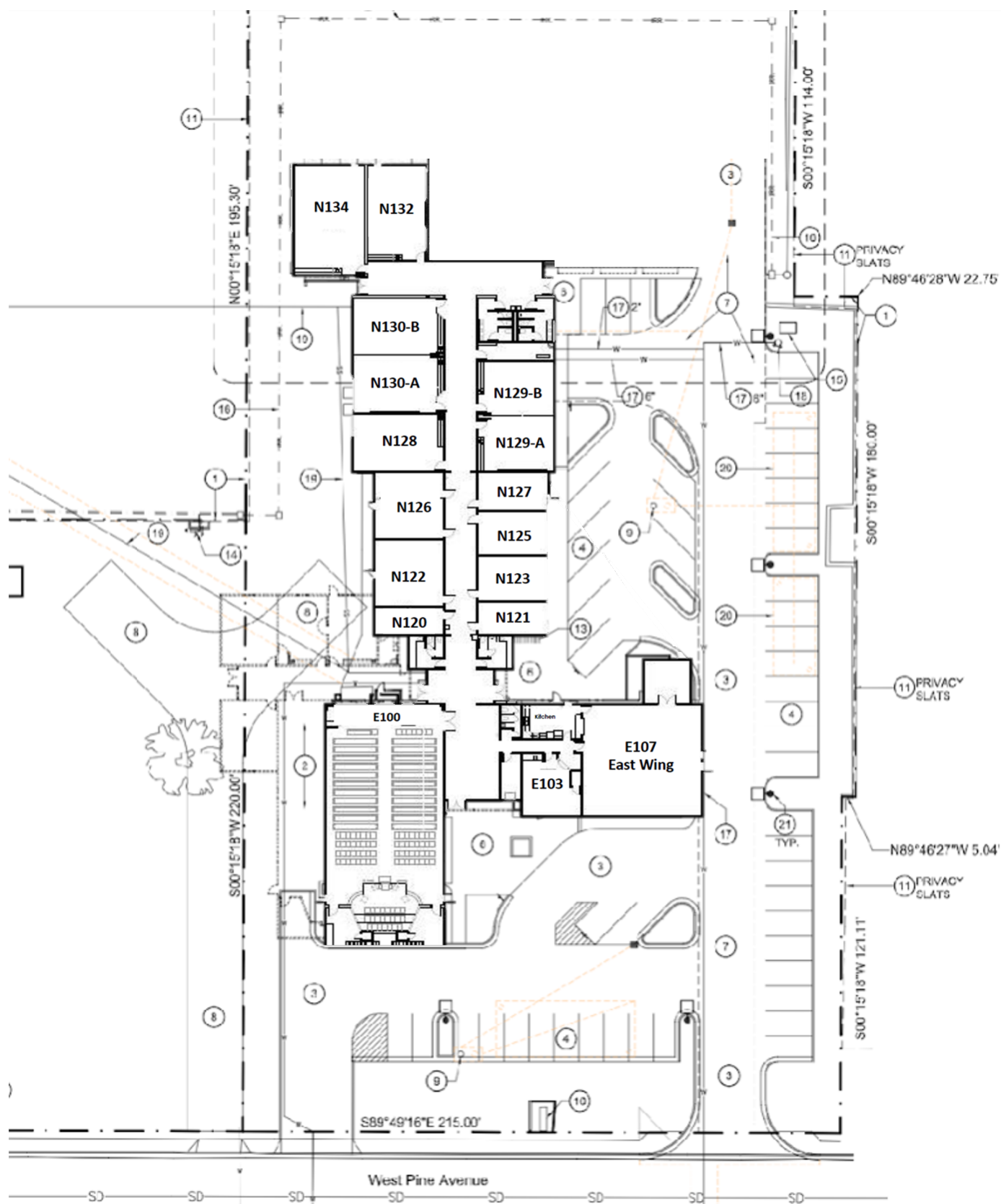
Backslide plan (If we need to reclose on a limited basis based on mass exposure)

Goals

Glorify God by;

1. **re-establishing Sunday worship service as quickly as feasible:** Gather as a group of believers (the local Church) to exercise our talents and gifts in service to God. That is Christ's purpose of the church!
2. **Continue building disciples:**
 - a. Establish best practices for bible studies, youth programs, Sunday School - size, location, technology
 - i. No large in person gatherings that can't keep social distancing at this point - no VBS, no AWANA, no Youth Group CCY- Timeline for decisions on these will follow state recovery plan
 - ii. Smaller bible studies encouraged with guidelines
3. **Expanding our outreach as quickly as feasible:** our involvement in world-wide missions, we want to follow Jesus in the fulfillment of the Great Commission



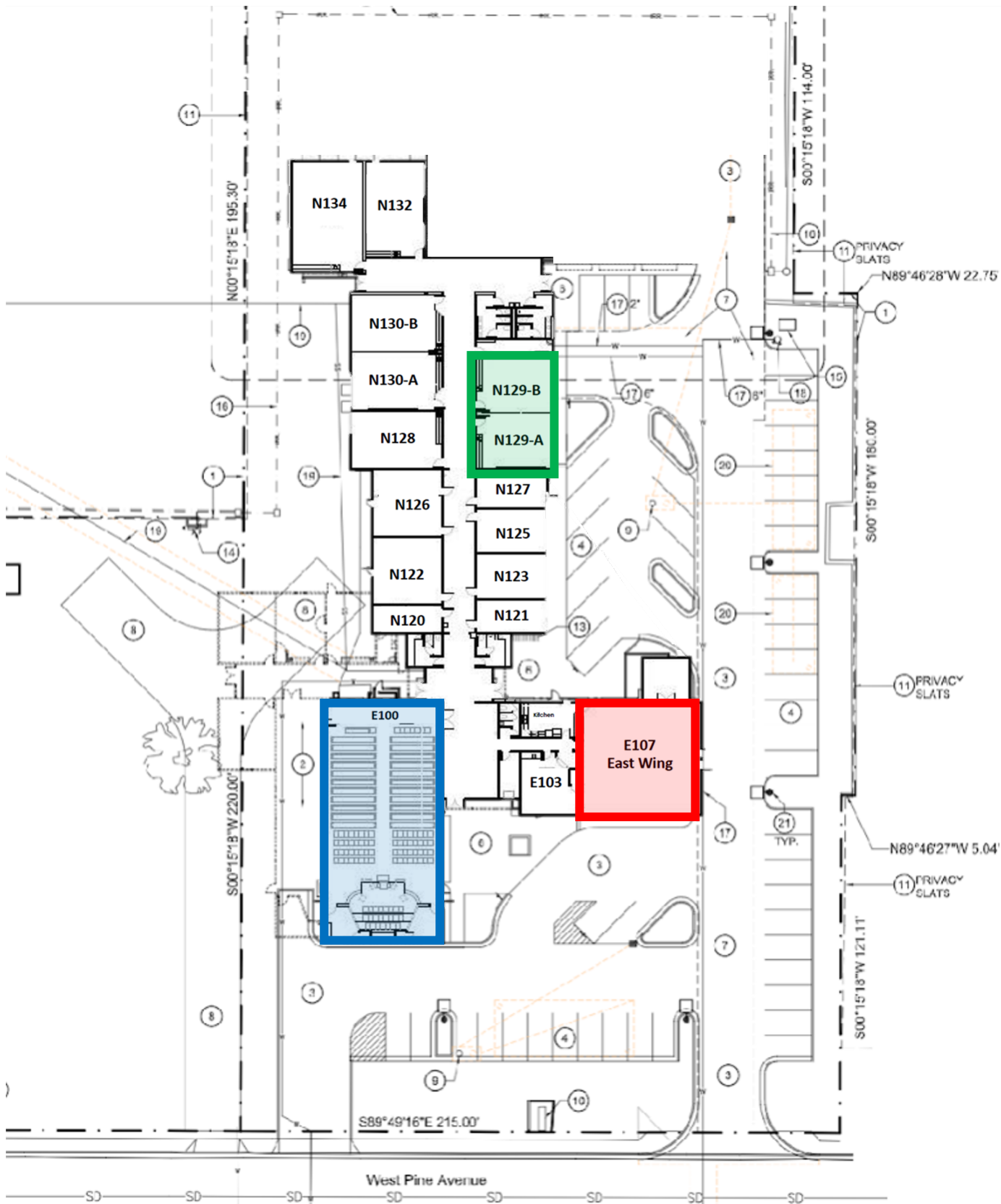


INSIDE ZONE MEETING PLACES

ZONE A

ZONE B

ZONE C



+ ENTER / EXIT FLOW

ZONE A

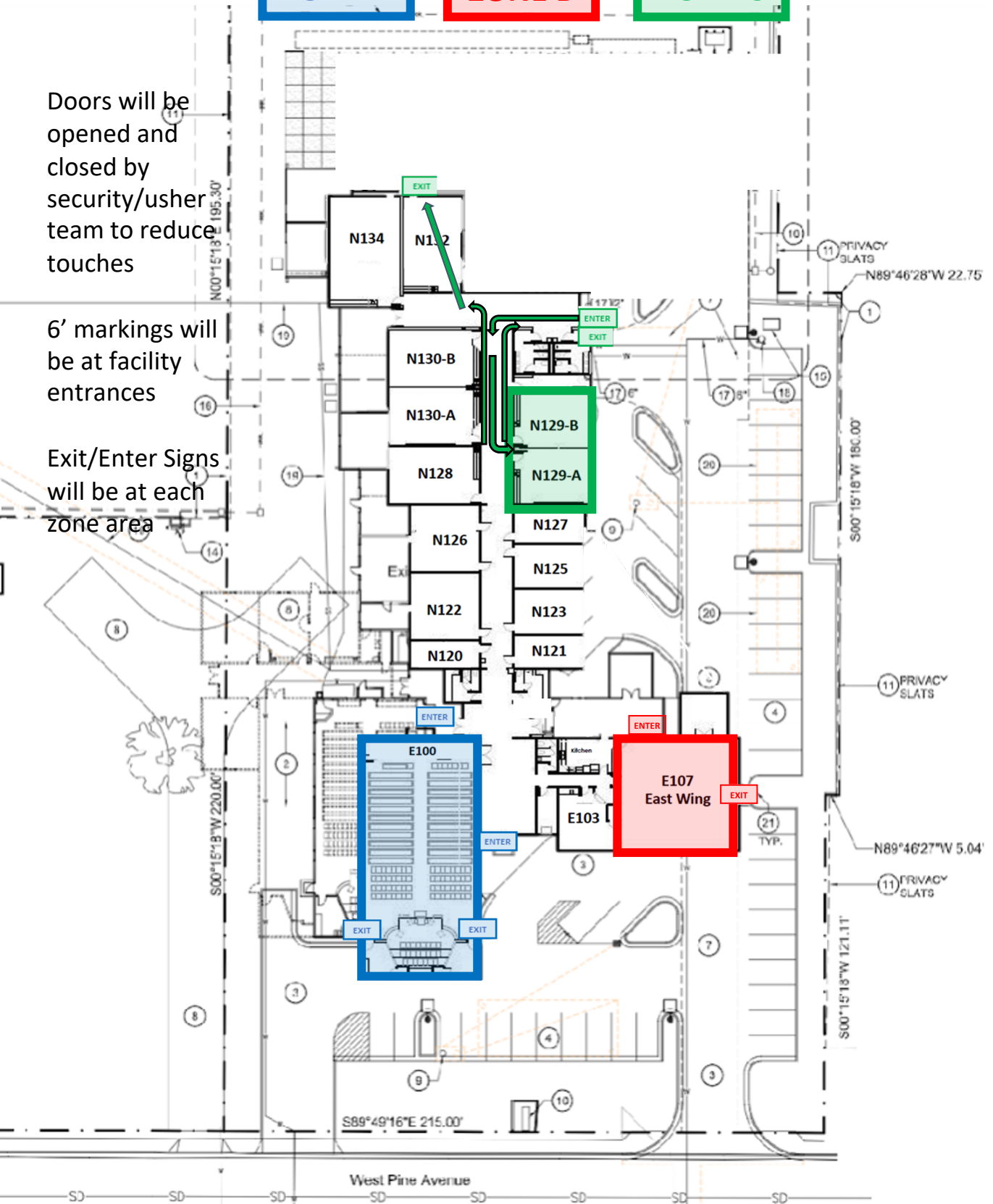
ZONE B

ZONE C

Doors will be opened and closed by security/usher team to reduce touches

6' markings will be at facility entrances

Exit/Enter Signs will be at each zone area



+

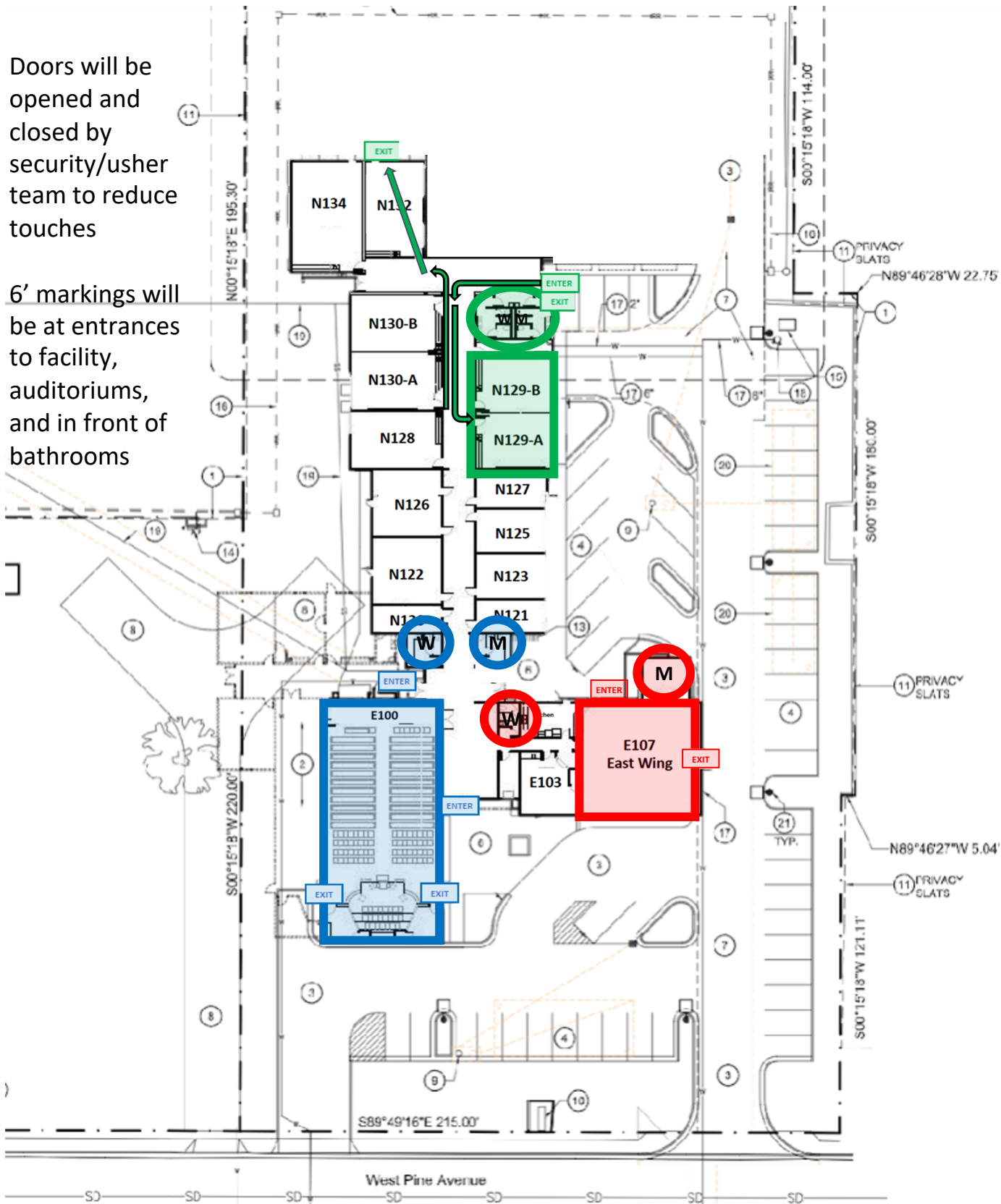


BATHROOMS



Doors will be opened and closed by security/usher team to reduce touches

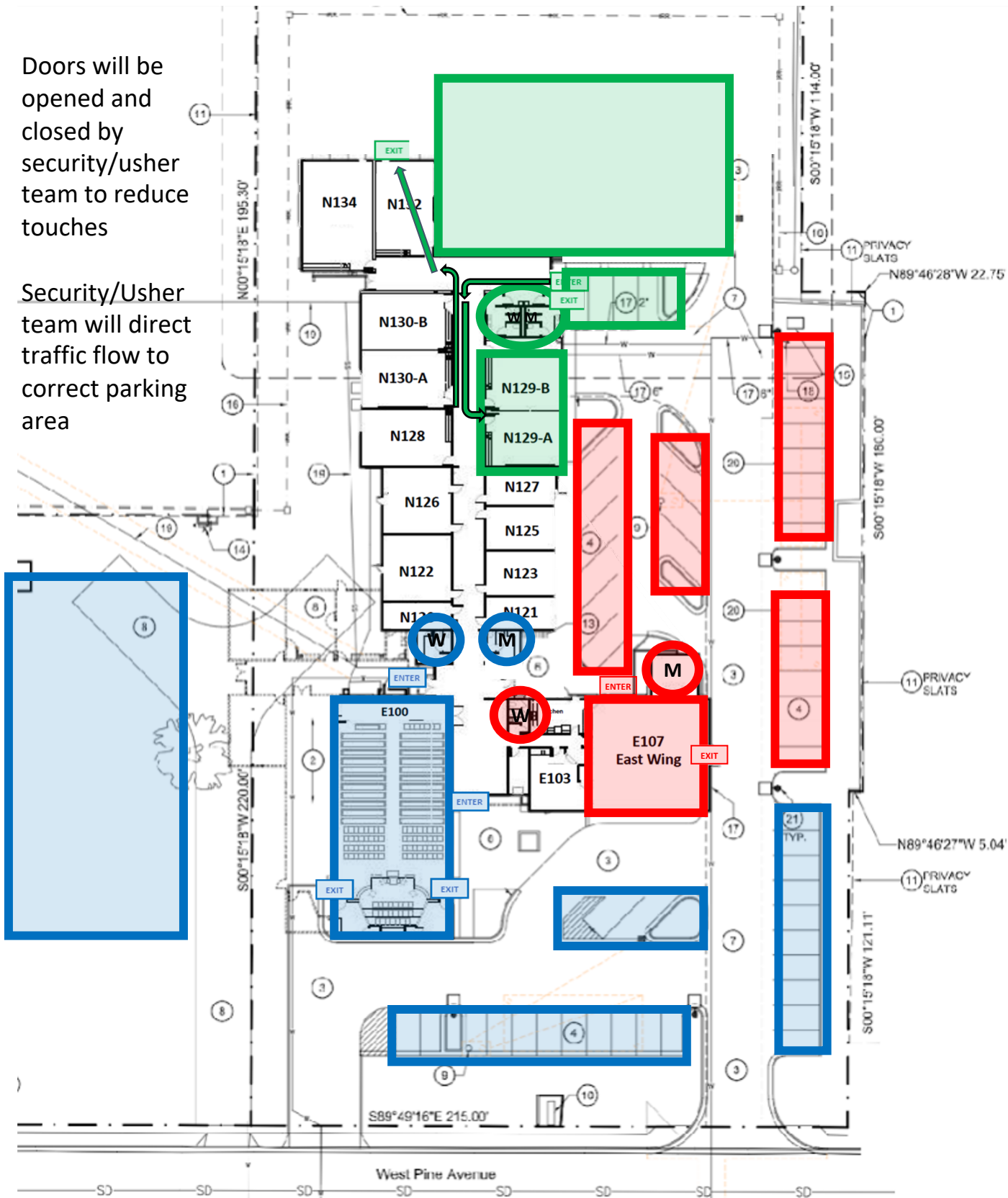
6' markings will be at entrances to facility, auditoriums, and in front of bathrooms

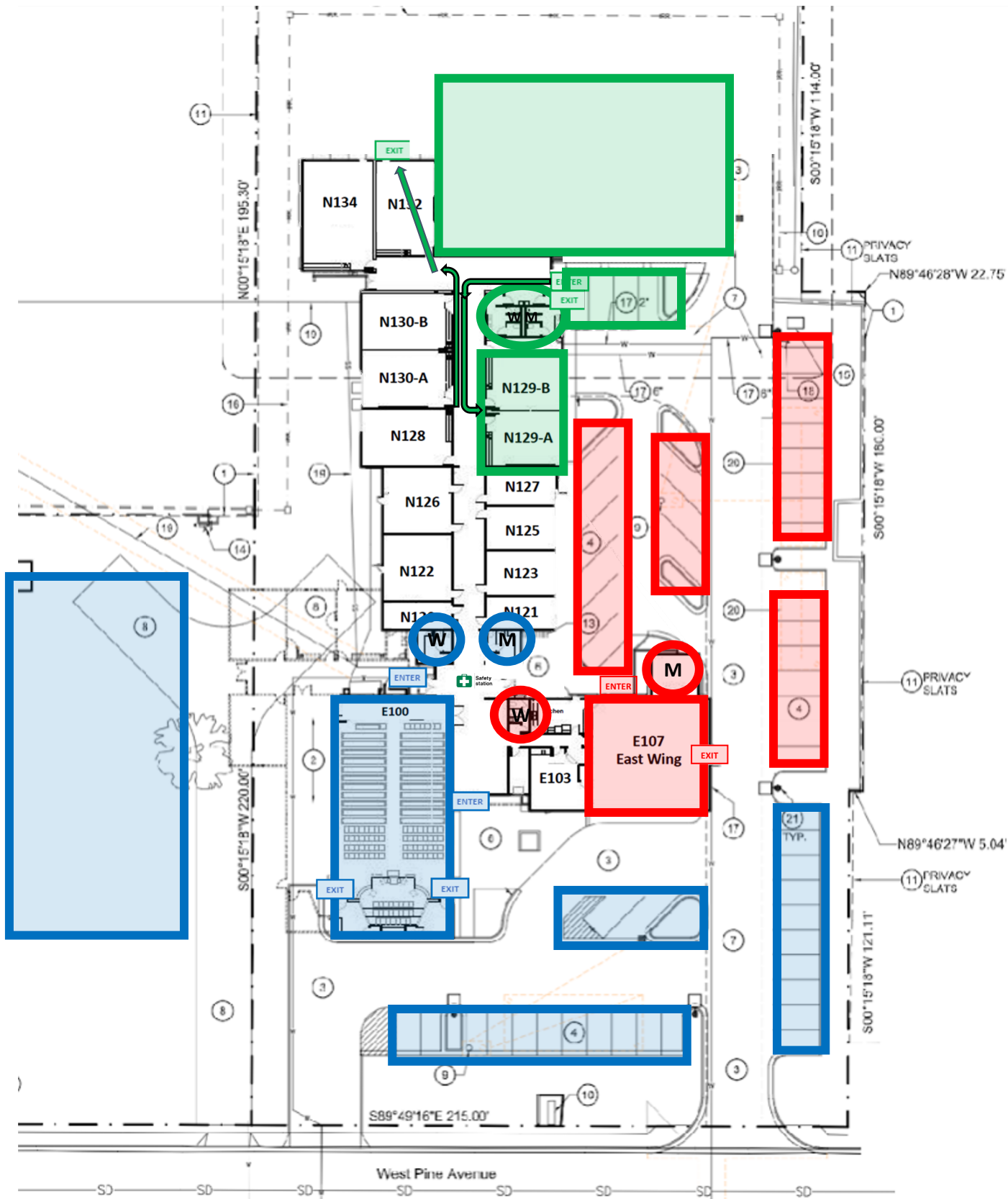


+ Parking

Doors will be opened and closed by security/usher team to reduce touches

Security/Usher team will direct traffic flow to correct parking area





MFBC Attendees by family unit

Unit	Total	~ 60 + age	~ < 60 age
1	25	75	18
2	68		
3-4	19		
4-5	19		
>6	10		

MFBC Ideal Seating Design

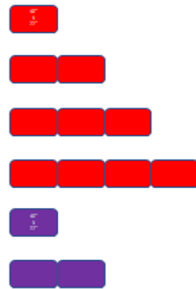
Unit	Total Need (2 services)
2	38 (half of 75)
4	10 (half of 19)
6	10 (half of 19)
8	5 (half of 10)
2	3 for visitors
4	1 for visitors

MFBC Capable Seating Design

Unit	Total Need (2 services)
2	35 (3 short of ideal)
4	9 (1 short of ideal)
6	8 (2 short of ideal)
8	4 (1 short of ideal)
2	visitors
1	Visitors



6 feet
zone



2 person unit (38)

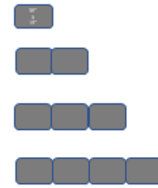
4 person unit (10)

6 person unit (10)

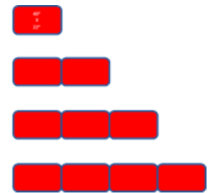
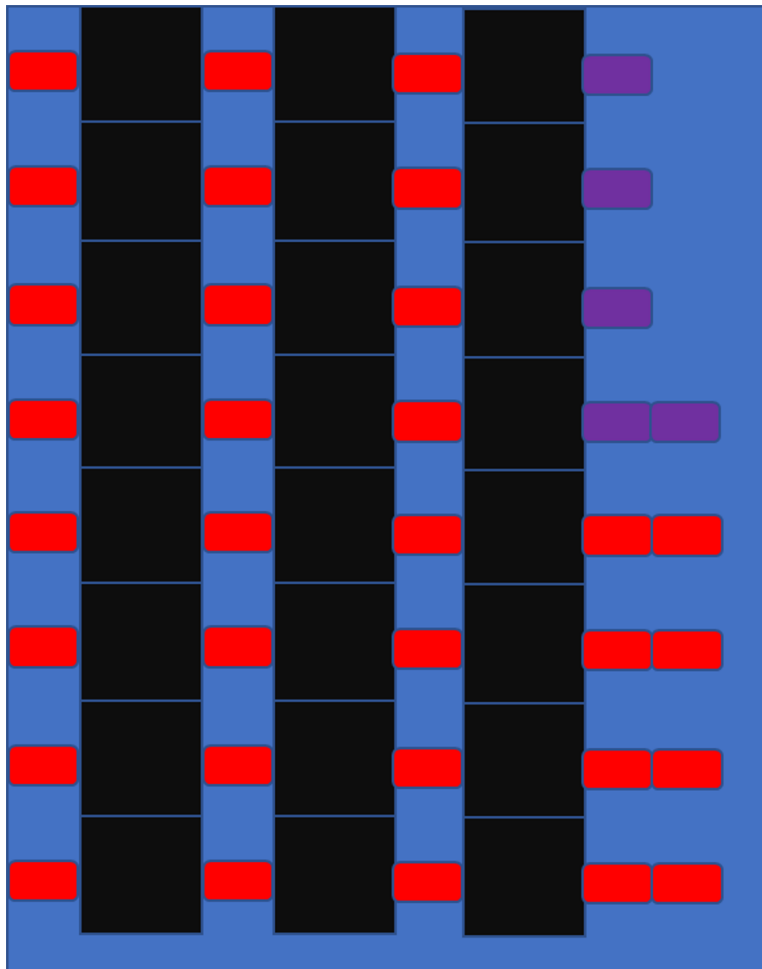
8 person unit (5)

2 person unit visitors (3)

4 person unit visitors (1)



ZONE A LAYOUT



ZONE A – 74 Max

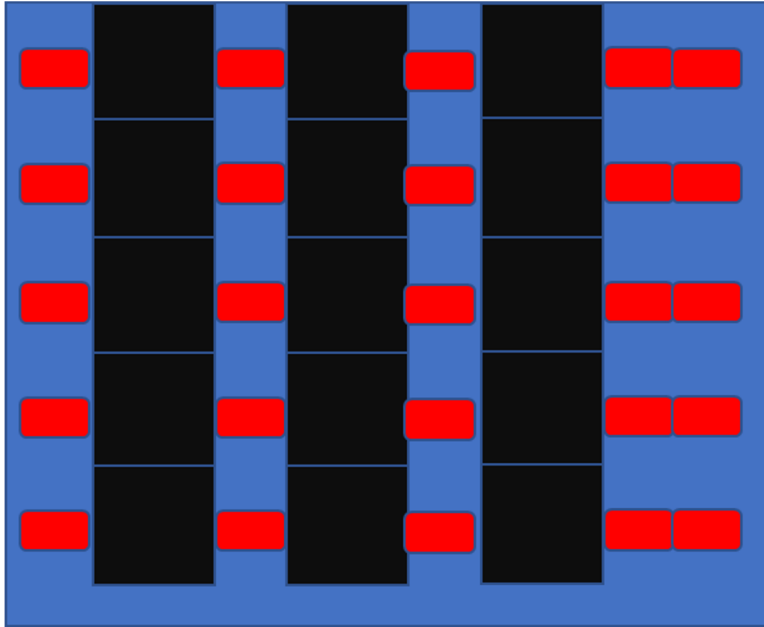
2 person unit (24)

4 person unit (4)

2 person visitor (3)

4 person visitor (1)

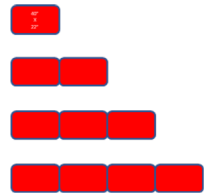
ZONE B LAYOUT



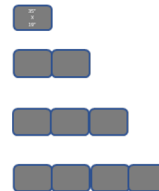
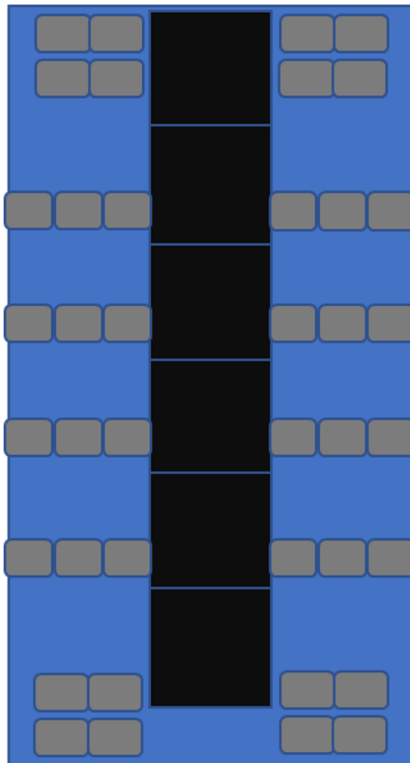
ZONE B – 50 Max

2 person unit (15)

4 person unit (5)



ZONE C LAYOUT



ZONE C – 80 Max

6 person unit (8)

8 person unit (4)

Action Items

- ✖ ☐ Assign persons to zones – Dave and Glenda
- ✖ ☐ Communication plan including letter to people, website, phone calls to people – Jim with approval of Elders
 - ☐ Elders will need to call or in conjunction with their deacons call everyone on shepherding list with the plan to gauge attendance level
- ☐ Set up Zone A,B, C seat config per drawing – Elders assigned to that zone need to lead a team to accomplish this
- ✖ ☐ Security Usher plan – Ray Ogden and Alan Cukurs
 - ✖ ☐ Training
 - ☐ Training
- ✖ ☐ Worship team plan – Benjy
 - ☐ No hymnals available, only words displayed on screens
- ✖ ☐ Clean/Sterilize Team & Plan – Mike Munger
 - ☐ Sterilize between services (sterilize bathroom NOT clean)
- ☐ Attendance at each service by zone – Elders assigned to that zone (this is in case of an infection from an attendee we will have accurate records for notification)
- ✖ ☐ 2 Elders per zone assignments – Dave
- ✖ ☐ Communicate to A/V team the plan – Dave
- ✖ ☐ Assure doors are open/closed at right times in zones – Security/Usher team (Ray and Alan)
 - ☐ Social distance markings on entrance walkways, entrance to zones, and bathrooms (6') – Alan to identify and lead a team to do this
- ✖ ☐ 100 masks made by quilting team – Mike Munger
- ✖ ☐ Signage for inside and out – Glenda and Randy
- ✖ ☐ Porta Potty for men Zone B – Dave
- ✖ ☐ Supplies – cleaning supplies (for clean/sterilize team), multiple hand sanitizers for each zone, tape for marking social spacing team (Alan)
 - ☐ Offering process for 3 zones and coordinate with security – Danny and Ray Ogden
- ✖ ☐ Display strategy(1 next to podium, 1 zone C) in Zone C – Dave work with A/V team
 - ☐ Communion suppliers - Alan

Dear church family,

Jesus says "I will build my church" (Matthew 16:18) and He will use living stones (1 Peter 2:5), you and I, in doing so. Jesus gave himself up for her (the church) (Eph 5:25). We are told to come together and worship (Heb 10:25, 1 Tim 4:13).

We are sharing with you the plan we've outlined to come back and have corporate worship at MFBC. While this isn't a perfect plan and we don't take pleasure in some of the restrictions, we believe glorifying God in worship by gathering is what we need to do. While we were developing this plan we wanted to focus on glorifying God and loving one another. Some of the necessary conditions we are implementing are for the purpose of loving each other. We are asking for your support, your understanding, and your complying during this transition period. We are also open to learning - we don't think we've thought of everything and we want to hear from you.

We want you to know that we are blessed with a facility that allows us to create 3 zones that meet social distance guidelines (6 feet separation between families). These zones will have separate parking, enter/exit, restrooms, seating facilities, and HVAC air distribution systems. We will be under the same roof but essentially in 3 totally separate zones. Given this facility, we will be able to accommodate our whole congregation plus some room for visitors by moving to 2 Sunday services (9:30 am and 1:00 pm). We have a sterilization team that will clean the zones and facilities between services. We will be assigning each of our families to a zone as well as service time. Unfortunately, we can't offer to swap or mix/match times/zones and people during this time of transition. We will continue to offer live stream of our services for those we can't accommodate.

Our security and usher teams will be there for both services and will be guiding us all through this transition. We are encouraging loving them as they help us with these new necessary conditions.

Some of the conditions we are promoting are;

- Security usher team will help direct you to a parking zone when you pull in
- The security team will be monitoring zone security (everyone stays in their zones)
- We are discouraging people who are sick from attending, to stay home, and to view via live stream - if we see signs of persons being sick, the security team will ask you to leave the facility
- Those that are in at-risk categories are encouraged to stay home and view via live stream
- We will mail you a card that will have your zone (A, B, or C) and your service (1 or 2) to bring and put on your dashboard so we can guide you to parking and enter/exit for your zone - if you come to the other service, the security team will not allow you to enter
- We are encouraging minimum movement once inside your zone and seated
- We are encouraging using masks - we ask that you BYOM (bring your own mask) but will have some available for those who can't get them and for visitors
- We are encouraging a service that reduces cross-traffic and reduces touches - please be aware of 6' spacing at entering the facilities (these will be marked), 6' spacing at entering the seating zone, 6' spacing at the restrooms, and please move FORWARD in the seating zone to the farthest forward available seating area
- We will not have hymnals, will not have an offering plate passed, and will not have greeting time so as to reduce touch - we will display lyrics to songs on monitors, we will have an offering plate at each exit (however, we still encourage you to mail in or give online your worship in offering)
- We will not have nursery service - Parents with children, children will need to stay with you inside the zone/seating set up for you. If they can't stay inside that area, we recommend staying home and watching live stream for this period.
- Bathrooms are per each zone - please try to minimize using bathrooms if possible (go at home before you come :>). One person allowed in bathroom at a time.

All of this will be contingent on decisions from the state of Idaho as they ease restrictions but as a church body, we want to be prepared to worship at the first possible date.